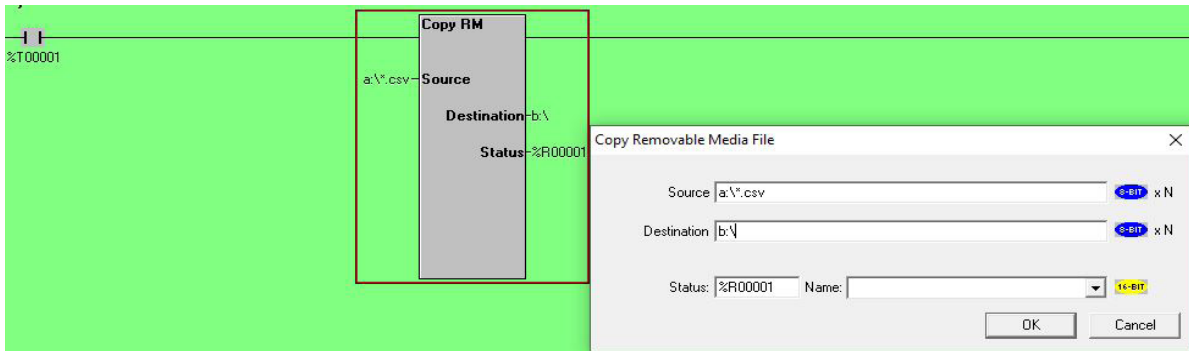


i³ Copy Removable Media File Tutorial

The purpose of this tutorial is to demonstrate the copying Removable Media file function of the i³. This function will allow the copying a file or multiple files on the RM card to different destination.



Firstly, double-click on the Copy RM function block to display pop-up window, where you will be able to enter your source and destination.

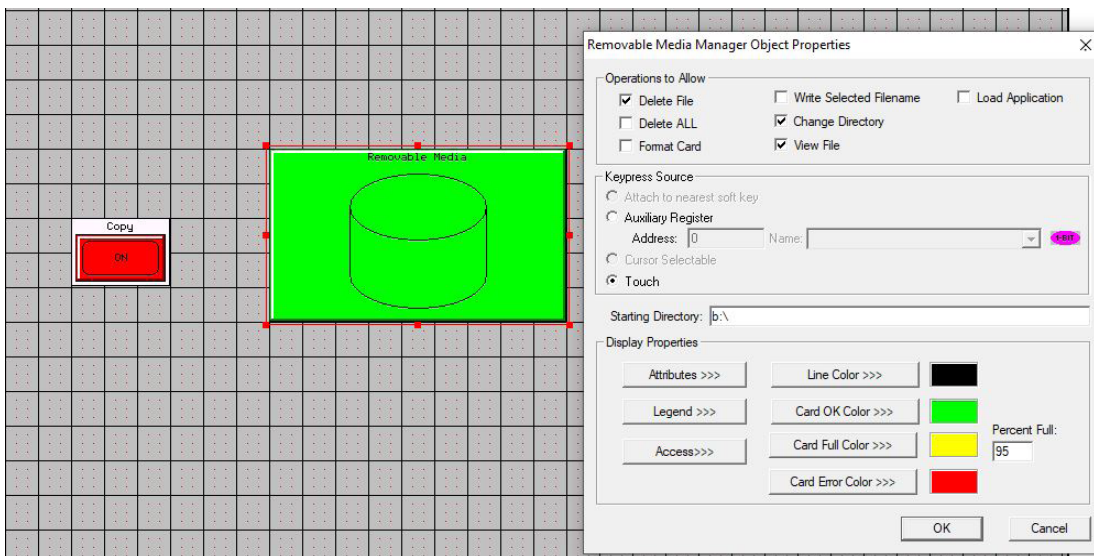
SOURCE: Insert the name of the file that you want to copy. The filename may be either fixed or obtained by reading from a contiguous block of registers in the i³ and may include sub-directories (i.e. "sub-directories\file-name.csv") or a:*.csv to copy all .csv files.

Note: in the above illustration a = Media Card (SD), b = USB Flash Drive. You MUST specify the filename extension as it is not automatically added. The drive prefix is NOT case-sensitive, therefore B and b are equivalent.

DESTINATION: This is the file which will be created in the copy process, containing all copied data.

STATUS: This is a 16-bit controller register that is used to show the status of the function block. Please refer to i³ Configurator Help File for the possible status code.

REMOVABLE MEDIA: This object allows configurable access to the Removable Media card. This object provides both visual information about the status of the attached MicroSD card and provides an entry point to the Removable Media Directory.



www.imopc.com

IMO Precision Controls Ltd
Unit 3, The Interchange, Frobisher Way
Hatfield, Hertfordshire AL10 9TG UK

Tel: +44 (0)1707 414 444
Fax: +44 (0)1707 414 445

Email: sales@imopc.com
Web: www.imopc.com



Bespoke technical training courses
available at our Hatfield training facility.
Call 01707 414 444 for more information